



HOW

HOW Planning LLP

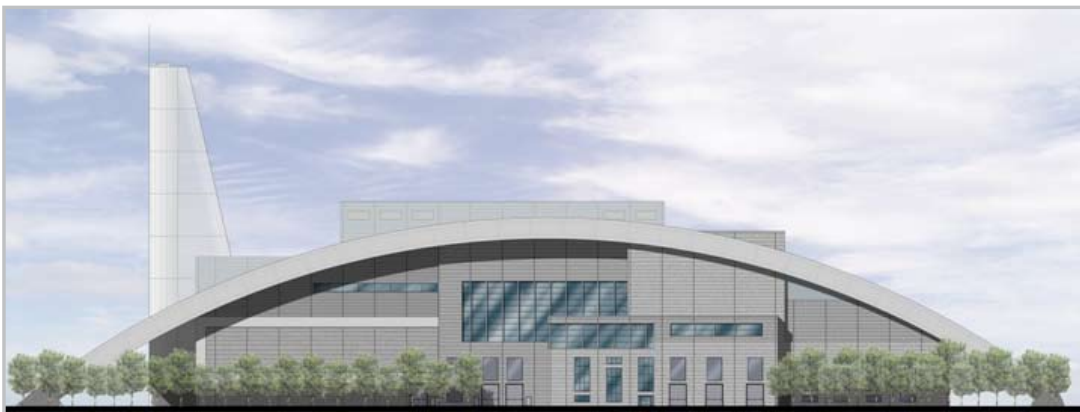
40 Peter Street
Manchester M2 5GP
T: 0161 835 1333
F: 0161 835 1322
howplanning.com

PRESS RELEASE

March 2009

Covanta Submits Planning Application For Energy-From-Waste Plant

Project: Energy from Waste Plant, Midpoint 18
Client: Covanta Energy
Location: Middlewich, Cheshire



Working on behalf of Covanta Energy, one of the world's largest operators of Energy from Waste plants, Manchester based specialists HOW Planning have submitted plans for a state-of-the-art Energy from Waste facility at the Midpoint 18 development in Middlewich, Cheshire.

The £200 million investment in the Energy from Waste facility will generate economic benefits in the surrounding area including the creation of up to 300 jobs during the construction period and up to 50 permanent new jobs.

The application, submitted to Cheshire County Council, is accompanied by a comprehensive Environmental Statement that runs to several volumes and examines all the potential impacts of the development.

Covanta's 35MW plant will generate enough energy for around 50,000 homes. It will also supply steam to the neighbouring British Salt site, helping to reduce energy costs, its carbon footprint and underpin the plants future viability. Energy is the single biggest cost for British Salt, one of the largest employers in Middlewich.

Covanta is also talking to other businesses about possible supplies of combined heat and power that could be used in a range of processes.



HOW

HOW Planning LLP

40 Peter Street
Manchester M2 5GP
T: 0161 835 1333
F: 0161 835 1322
howplanning.com

PRESS RELEASE

Continued...

Says Gary Halman, Partner at HOW Planning: “This is a hugely exciting development as it will help provide a locally based solution to two of the world’s growing problems; the ever increasing need for renewable energy and the issue of waste disposal. Covanta are international experts in the Energy from Waste field and the plans we have put forward are for a modern facility and source of clean power.”

Covanta Managing Director Malcolm Chilton said: “We are delighted to be moving forward with our plans and it is an extra bonus to be able to supply steam to our neighbours. This increases efficiency both for them and us.

“Our plan is to generate electricity by burning up to 370,000 tonnes of waste annually. This would virtually eliminate the need for additional landfill sites in Cheshire.”

Mr Chilton confirmed that low-cost electricity from the plant would be offered to around 20,000 local homes in Middlewich. The discount has been calculated to be worth at least 10% saving on household energy bills.

Further benefits from the scheme include:

- A Community Fund of £150,000 for the first year of operation, and £50,000 for each subsequent year of operations.
- Dramatic decrease in the quantities of waste requiring landfill
- Reduced cost of waste disposal in Cheshire – EfW will be cheaper than landfill
- Up to 300 jobs during construction
- Up to 50 permanent skilled jobs

Middlewich is central both to the geography and population distribution of Cheshire, and is located on excellent transport networks.

Background

Thermal treatment of waste is supported by the UK Government legislation, the Regional Waste Strategy for the North West (RWS) and the Cheshire Waste Local Plan.

Failure to dramatically reduce UK dependence on landfill will result in heavy financial penalties, totalling millions of pounds, which could lead to an increase in council taxes.