



HOW

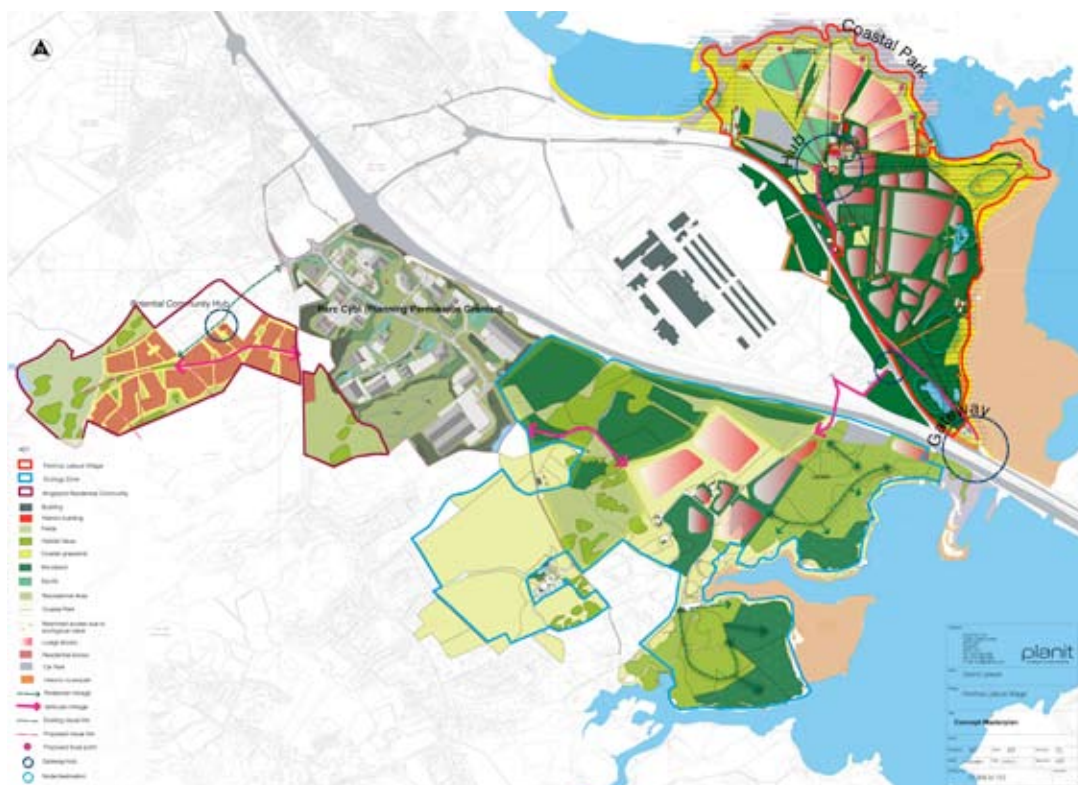
HOW Planning LLP

40 Peter Street  
Manchester M2 5GP  
T: 0161 835 1333  
F: 0161 835 1322  
howplanning.com

# PRESS RELEASE

July 2011

## HOW APPOINTED TO ADVISE ON PENRHOS LEISURE VILLAGE



HOW Planning has been appointed by Land & Lakes to manage the planning and environmental inputs for Penrhos Leisure Village, a 150 ha leisure and residential development at Holyhead on the Island of Anglesey which will create up to 600 new jobs.

The site, which is located in Penrhos, is to be split into three key areas to be known as Kingsland, Penrhos and Cae Glas and development proposals will be put forward as two planning applications for 25ha residential development at Kingsland and 125ha leisure Village at Penrhos and Cae Glas. The Leisure Village will include lodges, apartments, restaurants, small retail units, bars, cafes and various sports and leisure facilities.

HOW will be lead consultants on the project, managing an extensive professional team and will be co-ordinating a major Environmental Impact Assessment.

Says Gary Halman, Partner at HOW Planning: "This is a fantastic development to be working on for both our planning and environmental experts. The main focus of the Leisure Village will be the enjoyment of the natural and historic environment and it is Land & Lakes vision to create a development becomes integrated into the existing woodland and natural areas."