



HOW

HOW Planning LLP

40 Peter Street
Manchester M2 5GP
T: 0161 835 1333
howplanning.com

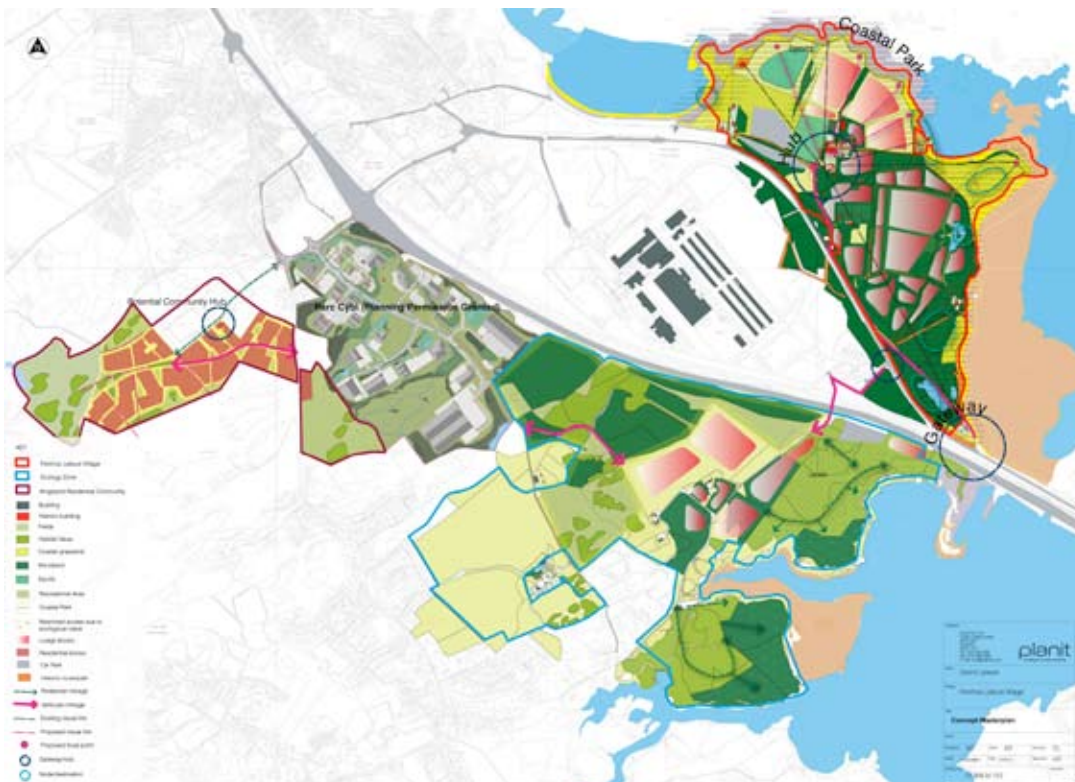
CASE STUDY

July 2011

Penrhos Leisure Village

Client: Land & Lakes Ltd

Location: Holyhead, Anglesey



HOW Planning has been appointed by Land & Lakes to manage the planning and environmental inputs for Penrhos Leisure Village, a 150 ha leisure and residential development at Holyhead on the Island of Anglesey which will create up to 600 new jobs.

The site is to be split into three key areas, to be known as Kingsland, Penrhos and Cae Glas, and will create a development that will be integrated into the existing woodland and natural areas. HOW will be lead consultants on the project, managing an extensive professional team and will be co-ordinating a major Environmental Impact Assessment.

Development proposals will be put forward as two planning applications for 25ha residential development at Kingsland and 125ha leisure Village at Penrhos and Cae Glas. The Leisure Village will include lodges, apartments, restaurants, small retail units, bars, cafes and various sports and leisure facilities.