



HOW

HOW Planning LLP

40 Peter Street
Manchester M2 5GP
T: 0161 835 1333
F: 0161 835 1322
howplanning.com

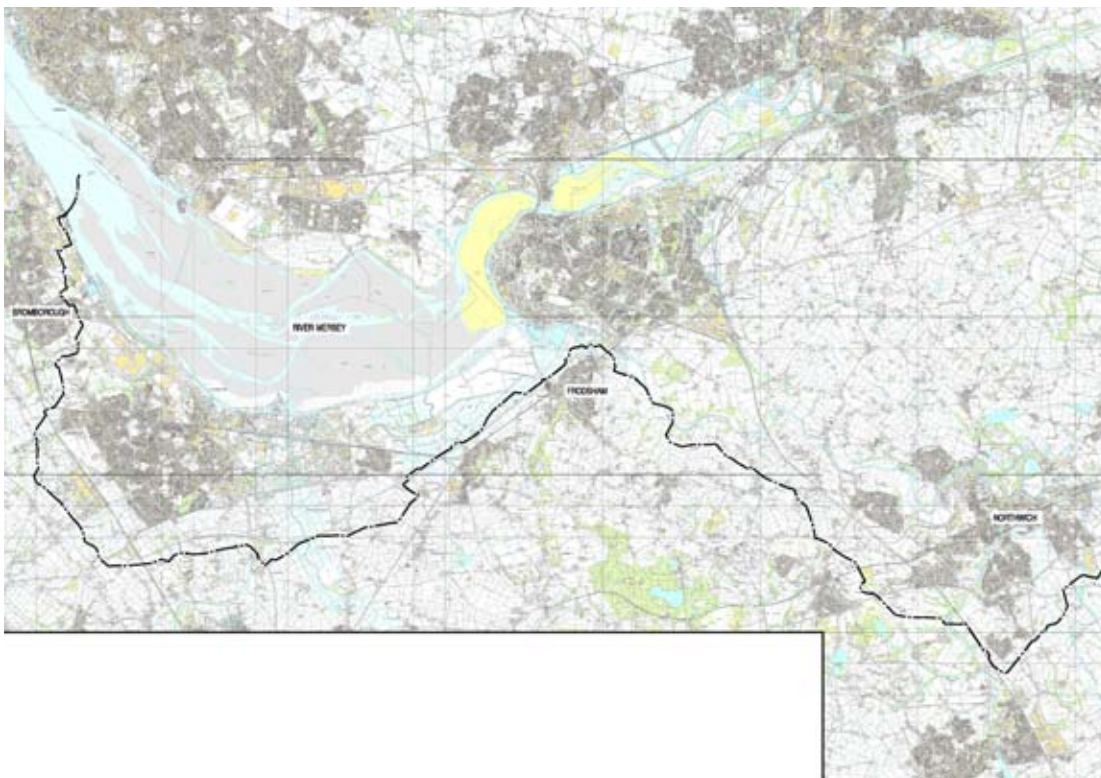
CASE STUDY

December 2009

Underground Gas Storage Facility

Client: King Street Energy Ltd
Location: Northwich, Cheshire

Following an extensive public inquiry, HOW Planning has successfully secured approval for an underground gas storage facility in Northwich, Cheshire on behalf of King Street Energy Ltd.



Located to the South East of Northwich, the 95 hectare underground site will house 10 salt caverns each of which will have the capacity to hold 160million cubic metres of tradable gas. The site is one of a few locations in the UK where such a project is possible due to the mineral content of the area; an area which is already associated with salt extraction and exploration.

In addition to the Salt Caverns, the planning approval includes permission to construct a 58km pipeline which will straddle the Wirral and Cheshire boundary, connecting the King Street site



HOW

HOW Planning LLP

40 Peter Street
Manchester M2 5GP
T: 0161 835 1333
F: 0161 835 1322
howplanning.com

CASE STUDY

Continued...

to a discharge point at the Mersey Estuary, to enable the caverns to be created through a process known as solution mining. Once at the caverns are at a required size the water will be pumped back out into the estuary, leaving a natural storage space for gas storage.

As part of the initial application an extensive environmental assessment was undertaken to ensure no adverse impacts on the surrounding environment. In addition HOW Planning worked with Wirral Borough Council and Cheshire West and Chester Council throughout the planning process as well as consulting with an extensive range of statutory and non statutory consultees and the public.