



HOW

HOW Planning LLP

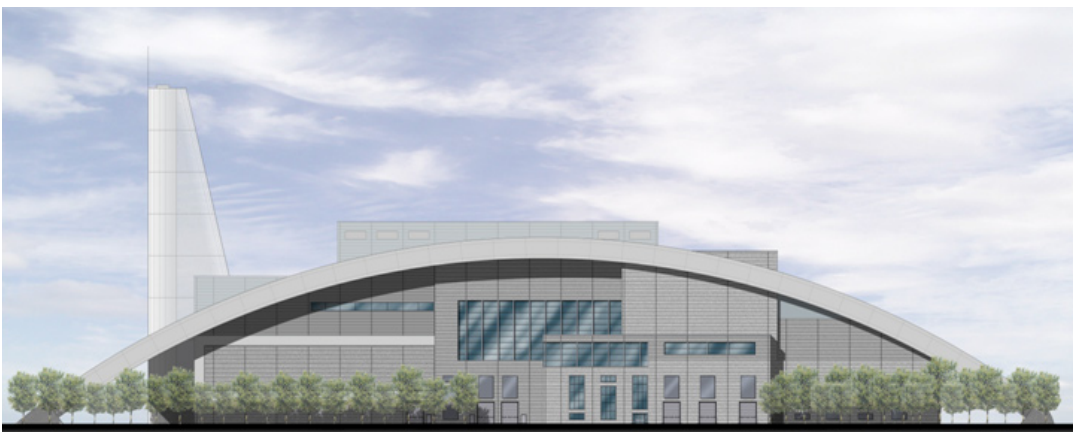
40 Peter Street
Manchester M2 5GP
T: 0161 835 1333
F: 0161 835 1322
howplanning.com

CASE STUDY

March 2009

Energy From Waste Plant

Client: Covanta Energy
Location: Middlewich



HOW Planning has submitted plans for a state-of-the-art Energy from Waste facility at the Midpoint 18 development in Middlewich, Cheshire. The application for the £200million project was made on behalf of Covanta Energy, a leading international Energy from Waste provider with over 20 years of experience in the industry.

Details

The application, submitted to Cheshire County Council, is accompanied by a comprehensive Environmental Statement that runs to several volumes and examines all the potential impacts of the development.

Covanta's 35MW plant will generate enough energy for around 50,000 homes, generating electricity by burning up to 370,000 tonnes of waste annually; virtually eliminating the need for additional landfill sites in Cheshire. Thermal treatment of waste is supported by the UK Government legislation, the Regional Waste Strategy for the North West (RWS) and the Cheshire Waste Local Plan.



HOW

HOW Planning LLP

40 Peter Street
Manchester M2 5GP
T: 0161 835 1333
F: 0161 835 1322
howplanning.com

CASE STUDY

Continued...

The plant will also supply steam to the neighbouring British Salt site, helping to reduce energy costs, its carbon footprint and underpin future viability. Energy is the single biggest cost for British Salt, one of the largest employers in Middlesbrough.

Low-cost electricity from the plant would be offered to around 20,000 local homes in Middlesbrough. The discount has been calculated to be worth at least 10% saving on household energy bills.

