



HOW

HOW Planning LLP

40 Peter Street
Manchester M2 5GP
T: 0161 835 1333
F: 0161 835 1322
howplanning.com

CASE STUDY

March 2009

Kingmoor Park, Carlisle

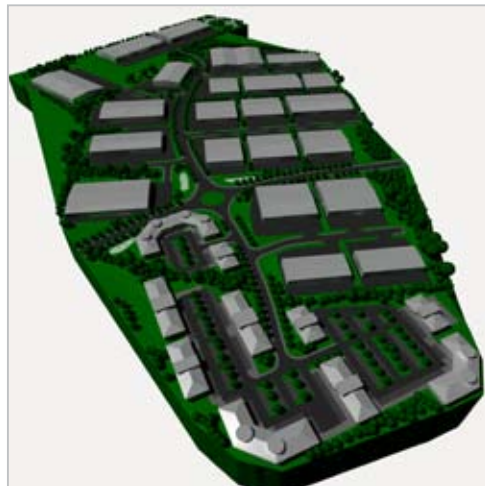
Client: Kingmoor Park Properties Limited

Location: Carlisle

HOW Planning has submitted an outline planning application on behalf of Kingmoor Park Properties Ltd to Carlisle City Council, for the development of over 40 hectares (100 acres) of land adjacent to Kingmoor Park; the 90 hectares (222 acres) industrial estate located at junction 44 of the M6.

Details

HOW led a team of masterplanners, including architects and HOW's own in-house Environmental Consultants, to create the proposals for the new scheme which has the capability of housing in excess of 112,000 sq m (1.2 million sq ft) of purpose built business and distribution accommodation. Submission of the application follows an extensive period of community consultation which has been co-ordinated by HOW Planning's in-house team of experts.



The Brunthill Estate forms the second phase of development of Kingmoor Park and was added to the KPPL portfolio in 2003; 4 years after the company acquired the core site. Since then it has been allocated in the Carlisle Local Plan for B1/B2 and B8 uses.



HOW

HOW Planning LLP

40 Peter Street
Manchester M2 5GP
T: 0161 835 1333
F: 0161 835 1322
howplanning.com

CASE STUDY

Continued...

The application includes an extensive array of industrial and warehouse buildings; high quality offices; units to meet the needs of small to large businesses; extensive landscaping and wildlife areas; and an area of Common Land to be retained as part of the proposal.

The Brunthill application site is allocated for development in the Carlisle Local Plan as an extension to the existing Regional Investment Site at Kingmoor Park, which it adjoins. Part of the site is also shown as a Strategic Employment Site and both designations recognise the site's strategic location for business and its importance to the sub regional economy centred on Carlisle.

